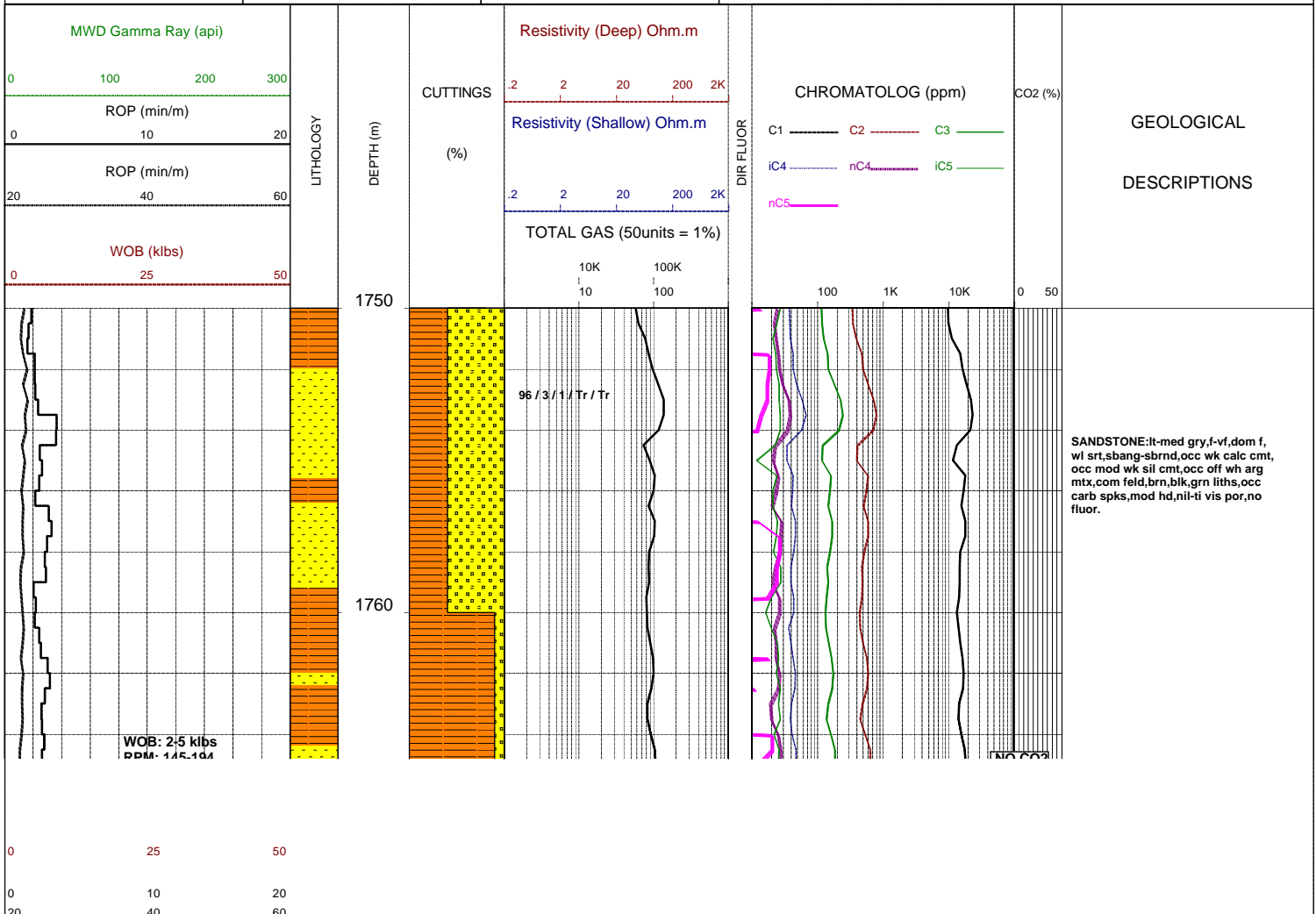


GLENAIRE 1

Field :	Kelly Bushing : PEP 160	Rig : ENSIGN 32	Open Hole:	Cased Hole:	Loggers : J.SUTTON
Block:	Ground Level : STATUS	Spud Date : 08/09/2006	17.5" (12.25") 307m	13.375" (9.625") 303.5m	N.LUIS
State : VICTORIA	GRS80 Ellipsoid MGA94 Zone54 :	TD Date : XX/XX/2006	12.25" (8.5") 1255m	9.625" (7.0") 1252m	J.TRETHEWEY
Country : AUSTRALIA	Lat. : 37°34'47.03S	Total Depth : VVV	8.5" XXXXm		
Scale : 1/ 200	Long. : 140°59'52.25E	Final Status : WWW		RRRR SSSS AAA	

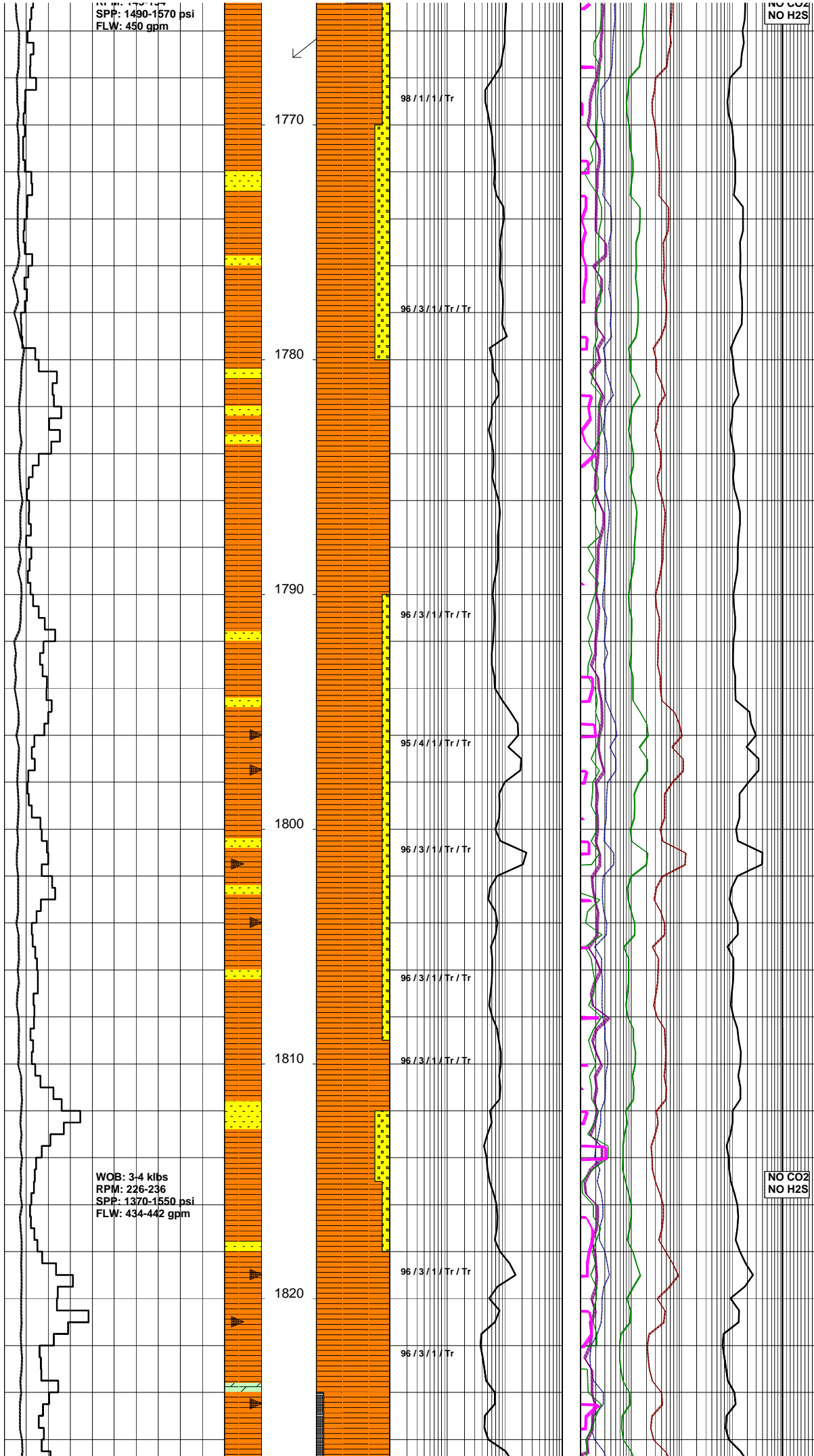
LITHOLOGY	ACCESSORIES	DRILLING DATA	ABBREVIATIONS
Conglomerate Coarse Sandstone Med Sandstone Calcareous Sst Silty Sandstone Siltstone Carb. Siltstone Calc. Siltstone Clay Limestone Dolomite Coal Anhydrite Gypsum Igneous Volcanic Metamorphic Cement	Pyrite Siderite Glauconite Feldspar Mica Ferrous Chert Calcareous Dolomitic Carbonaceous Lithoclast Breccia Foraminifera Corals Inoceramus Bryozoa Plant remains Fossils	Casing Shoe Bit Trip Wiper Trip Core DST Deviation Survey MUD DATA MW - Mud Weight (lb/gal) FV - Funnel Viscosity (s/qt) PV - Plastic Viscosity (cps) YP - Yield Point (lb/100ftsq) Gel - Gel Strength (10sec) WL - Water Loss (cc/30min) pH - Acidity / Alkalinity Ck - Cake (32nd/inch) O/W/S - Oil / Water / Solids Cl - Chlorides (mg/L) K+ - Potassium (mg/L) Rmf - Res. Mud Filtrate (ohmm)	BOPD - Barrels of Oil Per Day BWPD - Barrels of Water Per Day CG - Connection Gas CO - Circulate Out COND - Condensate c/c - Crush Cut DST - Drill Stem Test FLOW - Flow Rate (gal/min) GCM - Gas Cut Mud GCW - Gas Cut Water GTS - Gas To Surface INJ - Injection of Mist (bbls/hr) LCM - Lost Circulation Material MMCFD - Million Cubic Feet / Day NGTS - No Gas To Surface NOTS - No Oil To Surface NFTS - No Flow To Surface OCM - Oil Cut Mud OG - Over Gauge OH - Open Hole OTS - Oil To Surface Q - Flow Rate REC - Recovery FLUOR - Fluorescence ROP - Rate Of Penetration RPM - Revolutions Per Minute RTSTM - Rate Too Small To Measure Rw - Resistivity water r/r - Ring Residue SCFM - Standard Cubic Ft/Min (air) SGCM - Slightly Gas Cut Mud SPM - Strokes Per Minute SPP - Stand Pipe Pressure SWC - Side-Wall Core TG - Trip Gas WOB - Weight On Bit



SPP: 1490-1570 psi
FLW: 450 gpm

NO CO2
NO H2S

SURVEY @ 1767m: 3.0° 22'T



SILTY CLAYSTONE: brn/gry, med gry, med brn, aren, arg i/p, com carb spks, com feld, micmic i/p, frm-mod sft, sbfiss-sbbkly.

SANDSTONE: lt-med gry, f, occ vf, wl srt, sbrnd, occ wk calc cmt, com off wh arg mtx, grd to aren SLTST i/p, com feld, tr brn, blk, grn liths, occ carb spks, fri-mod hd, ti vis por, no fluor.

COAL: v dk brn-blk, dll, ea i/p, slty, grd to carb SLTST i/p, frm-brit-sbbkly, hckly-unevn.

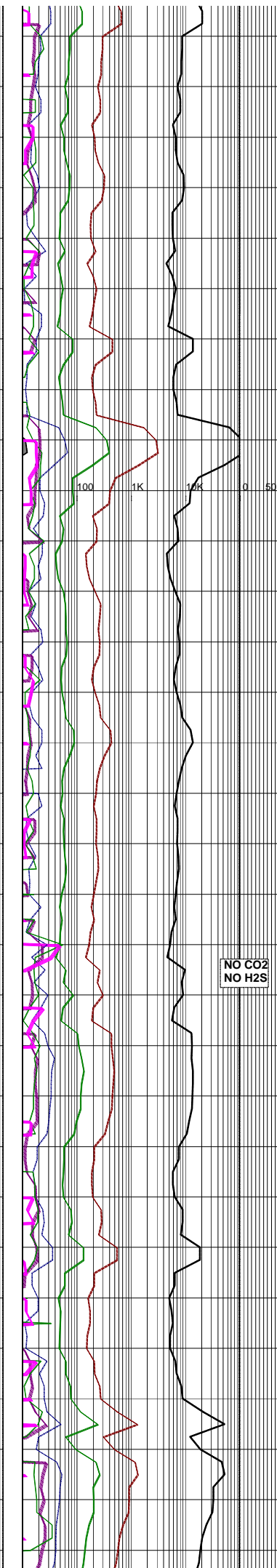
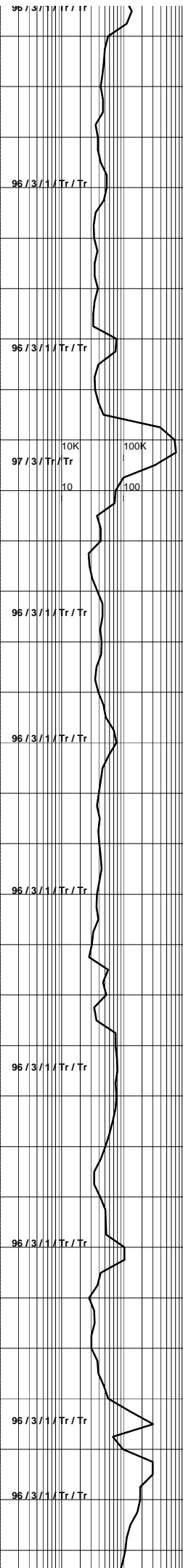
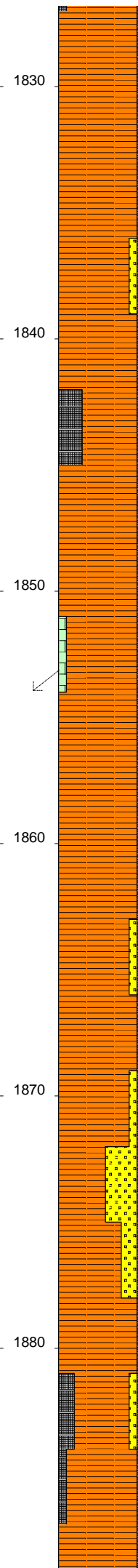
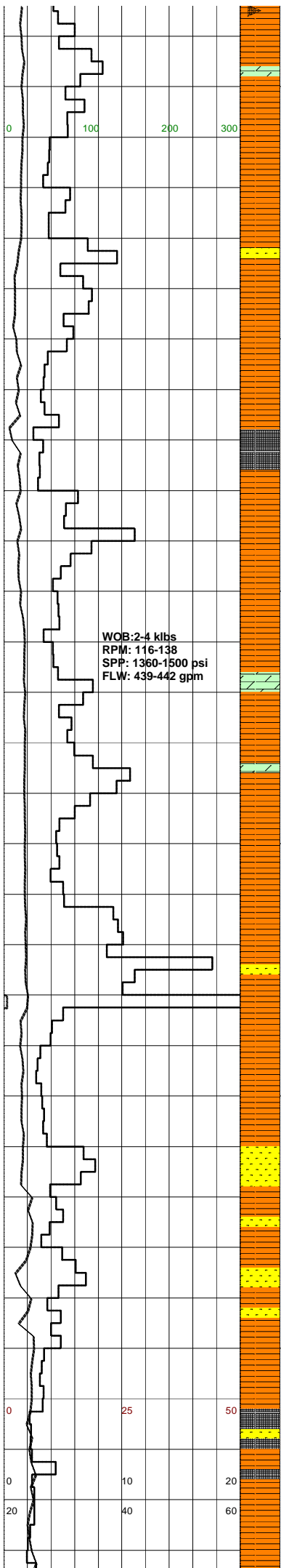
SILTY CLAYSTONE: brn/gry, med gry, med brn, aren, grd to vf SST i/p, arg, com carb spks, com feld, micmic i/p, frm-mod sft, sbfiss-sbbkly.

SANDSTONE: lt-med gry, vf-f, wl srt, sbrnd, mnr wk calc cmt, mnr wk sil cmt, com-abdt off wh arg mtx, grd to aren SLTST i/p, com feld, occ carb spks, mnr brn, blk, grn liths, fri, mnr mod hd, ti vis por, no fluor.

NO CO2
NO H2S

COAL: v dk brn-blk, dll-sbvt i/p, slty, grd to carb SLTST i/p, brit-frm, sbbkly, evn-conch.

WOB: 3-4 klbs
RPM: 226-236
SPP: 1370-1550 psi
FLW: 434-442 gpm



DOLOMITE:tn,lt brn,mnr med brn,lut, arg,xln,hd-mod hd.

SILTY CLAYSTONE:brn/gry,med gry, med brn,aren,arg,sil i/p,com feld,occ carb spks,micmic i/p,frm-mod hd, sbfiss-sbbkly.

SANDSTONE:lt-med gry,vf-f,wl srt, mnr wk calc cmt,mnr wk sil cmt,com-abdt off wh-lt gry silty mtx,grd to aren SLTST i/p,com feld,occ carb spks,tr grn liths,fri-mod hd i/p,v pr-ti vis por,no fluor.

COAL:blk,tr v dk brn,svbit-vit,arg i/p,brit-mod hd,sbbkly,unevn.

DOLOMITE:tn,lt brn,mnr med brn,lut, arg,aren i/p,hd-mod hd.

SURVEY @ 1854m: 3.25° 17°T

SILTY CLAYSTONE:med gry,brn/gry, med brn,aren,arg,sil i/p,com feld, occ carb spks,micmic i/p,mod hd-frm,sbfiss-sbbkly.

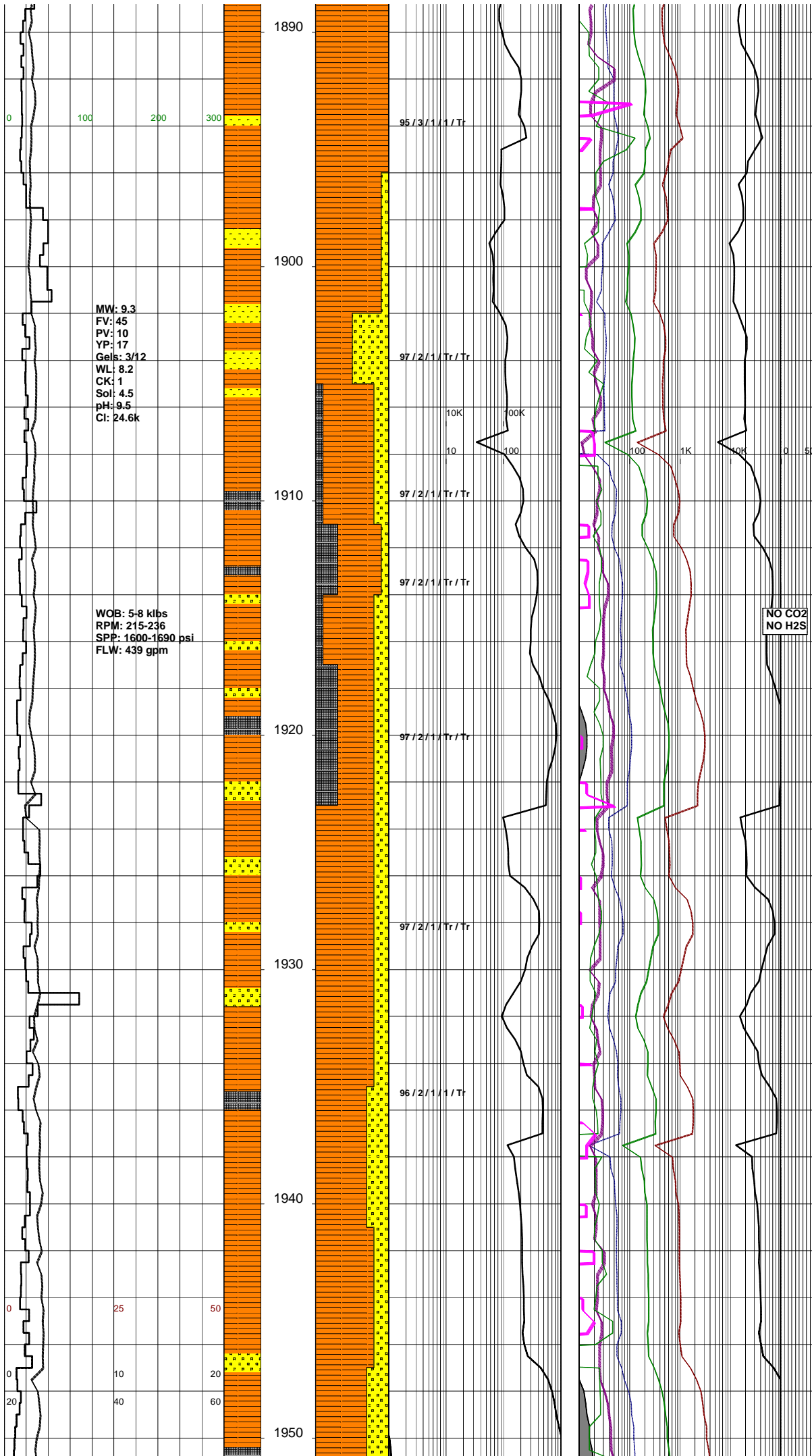
**NO CO2
NO H2S**

SANDSTONE:lt-med gry,vf-f,mnr med, mod wl srt,sbrnd-sbang,occ wk calc cmt,abdt off wh arg mtx,grd to aren SLTST i/p,com feld,occ carb spks,occ grn liths,fri-st,v pr vis por,no fluor.

SILTY CLAYSTONE:med gry,gry/brn, med brn,aren,arg,com feld,com carb spks,micmic i/p,frm-mod hd i/p, sbbkly-sbfiss.

COAL:v dk brn-v dk gry,blk,svbit-vit,dll i/p,brit,sbbkly,hckly

SILTY CLAYSTONE:med gry,gry/brn, aren,arg,com feld,com carb spks, micmic i/p,frm-mod hd i/p,sbbkly-sbfiss.



SANDSTONE:lt-med gry,vf-f,wl srt, sbnd-sbang,occ wk calc cmt,mnr wk sil cmt,com-abdt off wh arg mt,x,com feld,occ carb spks,rr grn liths,fri, v pr vis por,no fluor.

SILTY CLAYSTONE:med gry,gry/brn, aren,arg,sil i/p,com feld,com carb spks,micmic i/p,frm-mod hd i/p, sbbiky-sbfiss.

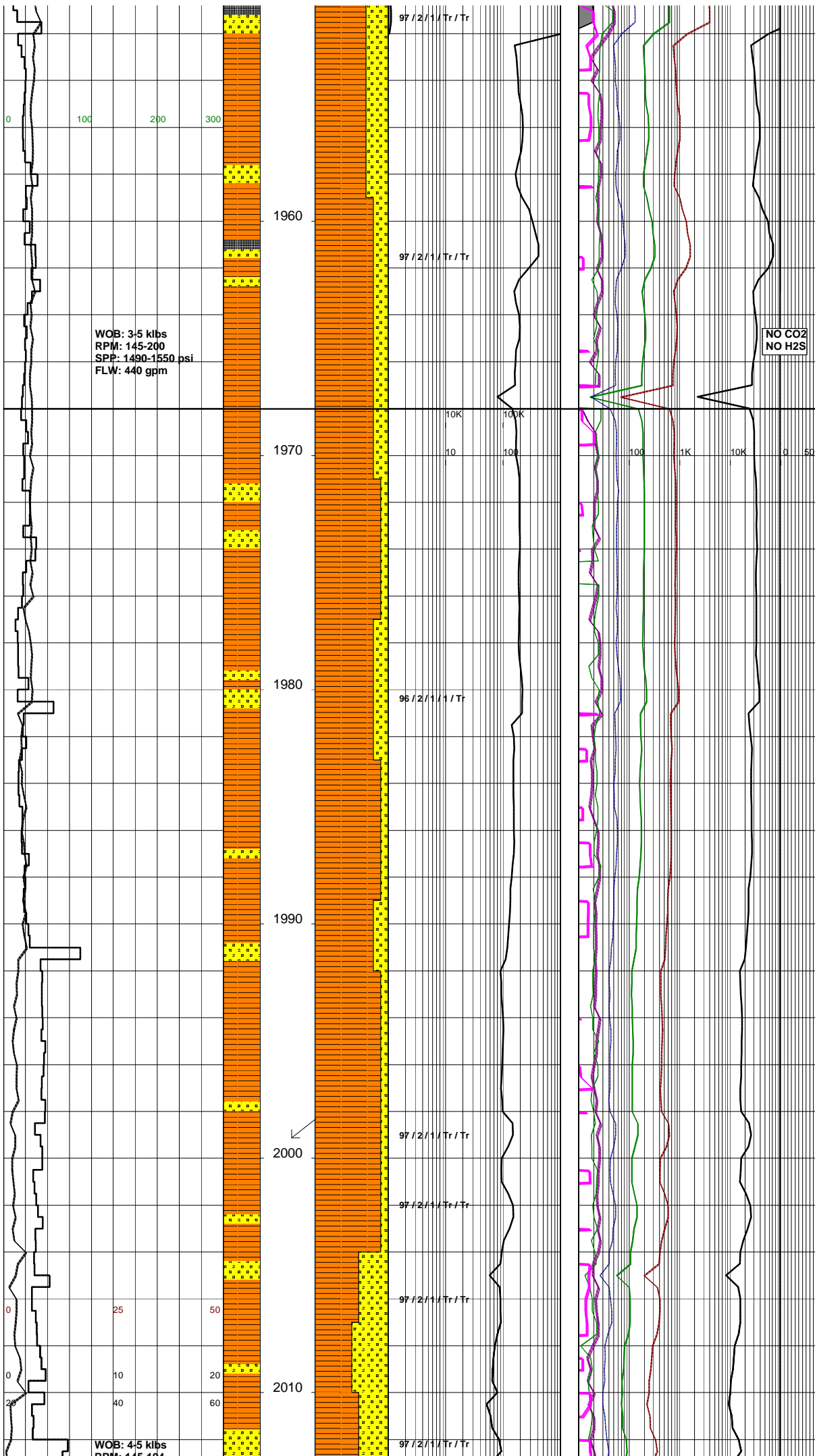
COAL:v dk brn-v dk gry,blk,svbit-vit,dll i/p,brit,sbbiky,hckly

COAL:v dk brn-v dk gry,blk,svbit-vit,dll i/p,brit,sbbiky,hckly

SANDSTONE:lt-med gry,vf-f,wl srt, sbnd-sbang,occ wk calc cmt,mnr wk sil cmt,com-abdt off wh arg mt,x,com feld,occ carb spks,rr grn liths,fri, v pr vis por,no fluor.

SILTY CLAYSTONE:med gry,gry/brn, aren,arg,sil i/p,com feld,com carb spks,micmic i/p,frm-mod hd i/p, sbbiky-sbfiss.

SANDSTONE:lt-med gry,vf-f,wl srt, sbnd-sbang,occ wk calc cmt,mnr wk sil cmt,com-abdt off wh arg mt,x,com feld,occ carb spks,rr grn liths,fri, v pr vis por,no fluor.



COAL: v dk brn-v dk gry, blk, sbvit- vit, dll i/p, brit, sbbiky, hckly

LAIRA FORMATION;
1968m (-1892mSS)

SILTY CLAYSTONE: med gry, gry/brn, aren, arg, sil i/p, com feld, com carb spks, micmic i/p, frm-mod hd i/p, sbbiky-sbfiss.

SANDSTONE: lt-med gry, off wh, vf-f, sbang-sbrnd, mod srt, wk calc cmt, occ sil cmt, comm abdt arg mtx, tr feld, comm abdt blk, brn, grn liths, occ carb spks, mod hd, pr vis por, no flour.

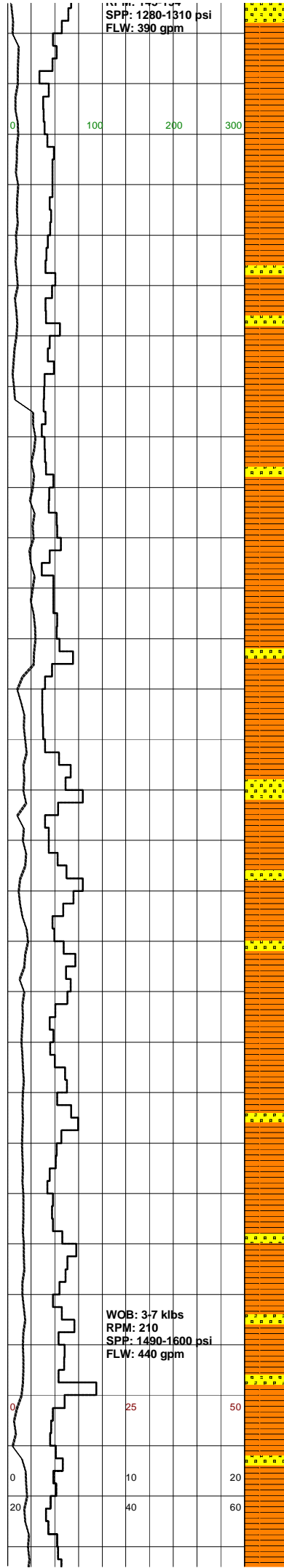
CONTRILLED DRILLING FROM
1991m to 2078m.

SILTY CLAYSTONE: lt-med gry, lt-dk brn, aren i/p, grd to SLTST, micmic, tr liths, carb spks, sft-mod hd, occ hd, sbbiky.

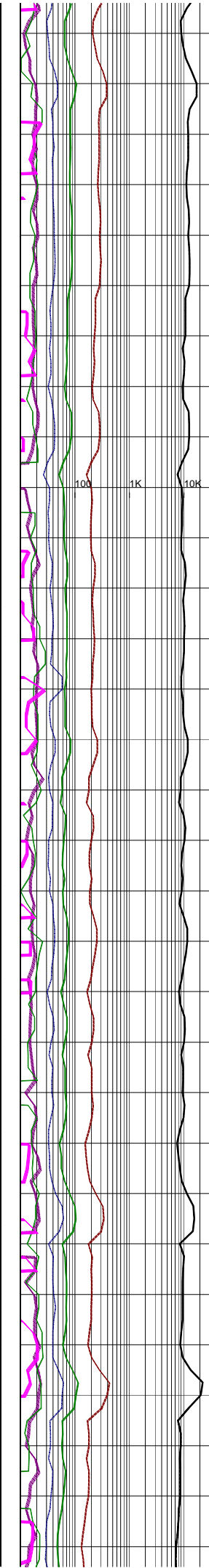
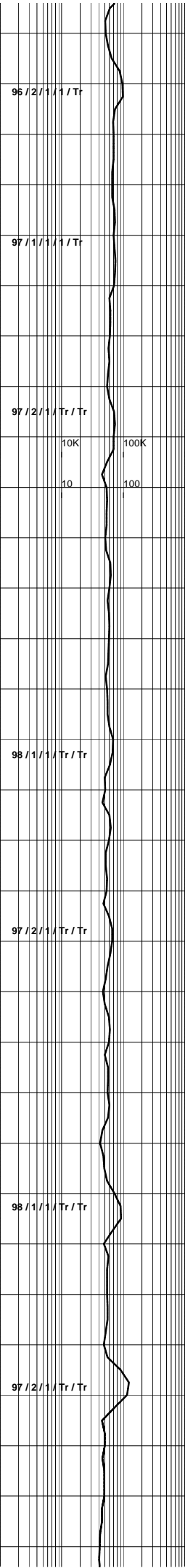
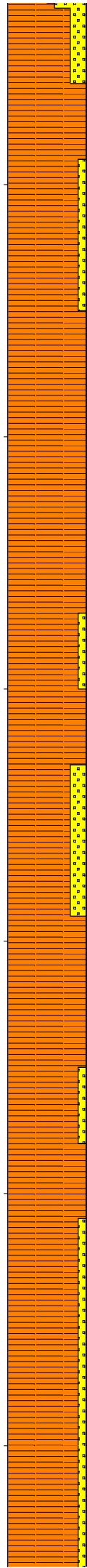
SURVEY @ 1999m: 3.75° 42°T

SANDSTONE: lt-med gry, off wh, vf-f, sbang-sbrnd, mod srt, wk calc cmt, occ sil cmt, comm abdt arg mtx, tr feld, comm abdt blk, brn, grn liths, occ carb spks, mod hd, pr vis por, no flour.

SPP: 1280-1310 psi
FLW: 390 gpm



WOB: 3-7 klbs
RPM: 210
SPP: 1490-1600 psi
FLW: 440 gpm



NO CO2
NO H2S

SILTY CLAYSTONE:lt-med gry,grn gry,occ dk gry,lt-dk brn,arg; aren i/p,grd to SLTST,micmic, tr liths,sft-mod hd,sbblyky.

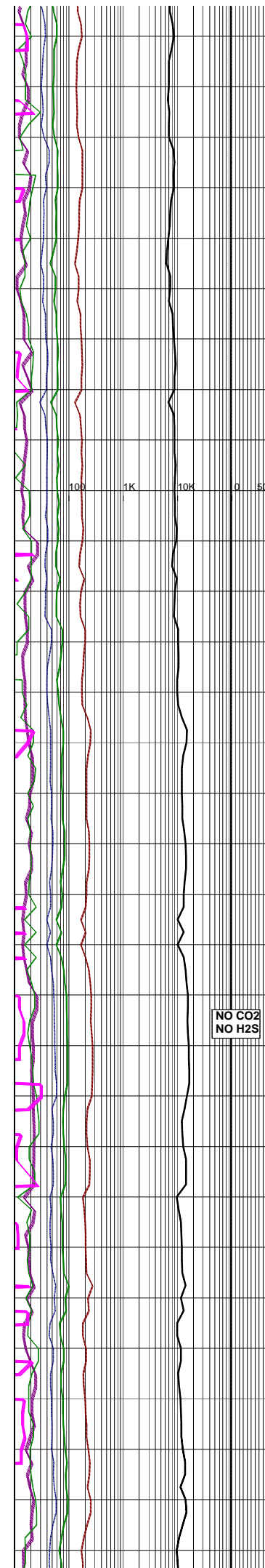
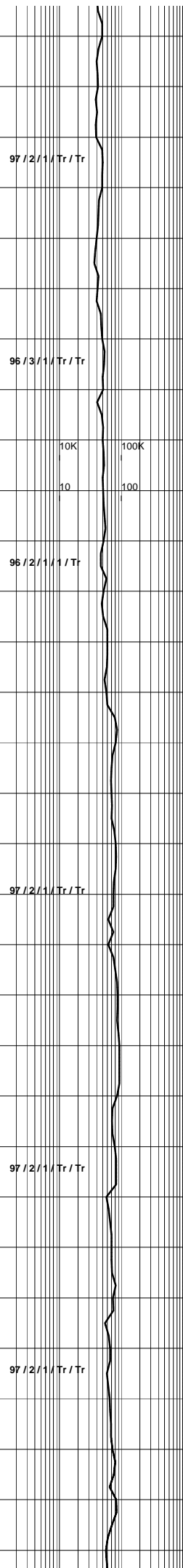
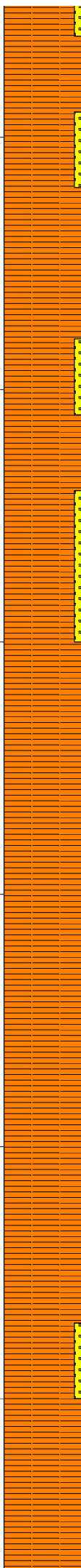
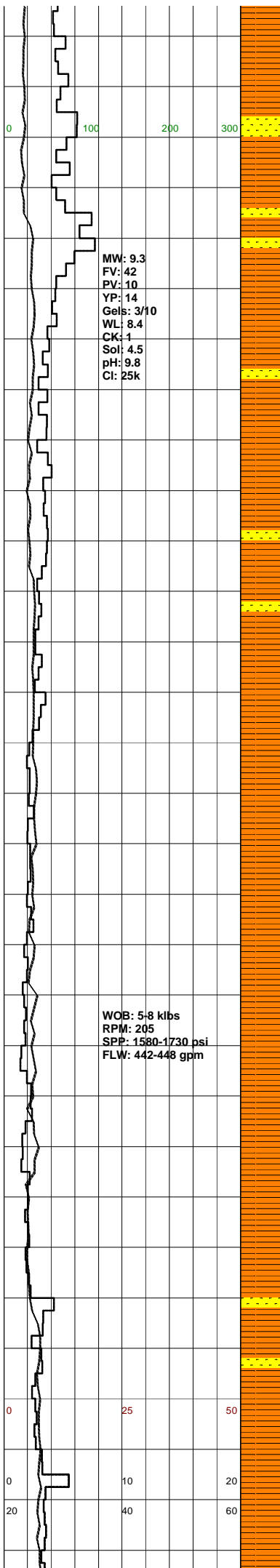
SILTY CLAYSTONE:lt-med gry,grn gry,occ dk gry,lt-dk brn,arg; aren i/p,grd to SLTST,micmic, tr liths,sft-mod hd,sbblyky.

SILTY CLAYSTONE:lt-med gry,grn gry,occ dk gry,lt-dk brn,arg; aren i/p,grd to SLTST,micmic, tr liths,tr carb spks,sft-mod hd,sbblyky.

SANDSTONE:lt-dk gry,wh-off wh, vf-f,sbang-sbrnd,mod srt,wk calc cmt,occ sil cmt,abdt arg mtx,tr feld,blk,brn,grn liths,occ carb spks,mod hd,pr vis por,no flour.

NO CO2
NO H2S

SILTY CLAYSTONE:lt-med gry,grn gry,occ dk gry,lt-dk brn,arg; aren i/p,grd to SLTST,micmic, tr liths,tr carb spks,sft-mod hd,sbblyky.



SANDSTONE:lt-dk gry,wh-off wh, vf-f, sbang-sbrnd, mod srt, wk calc cmt, occ sil cmt, abdt arg mtx, tr feld, blk, brn, grn liths, occ carb spks, mod hd, pr vis por, no fluor.

SITLY CLAYSTONE:brn/gry, med gry, aren, arg, mnr sil i/p, grd to SLTST, com feld, occ carb spks, tr dissem pyr, frm-mod hd, sbfiss-sbblky.

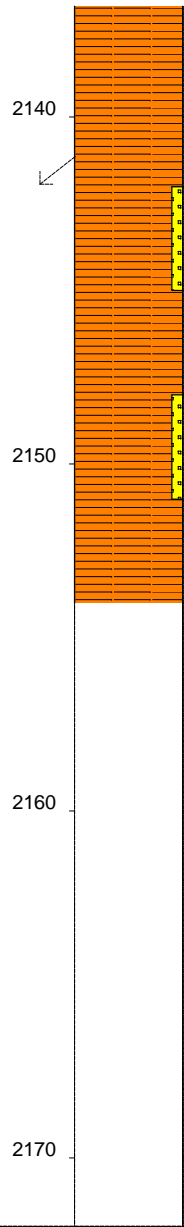
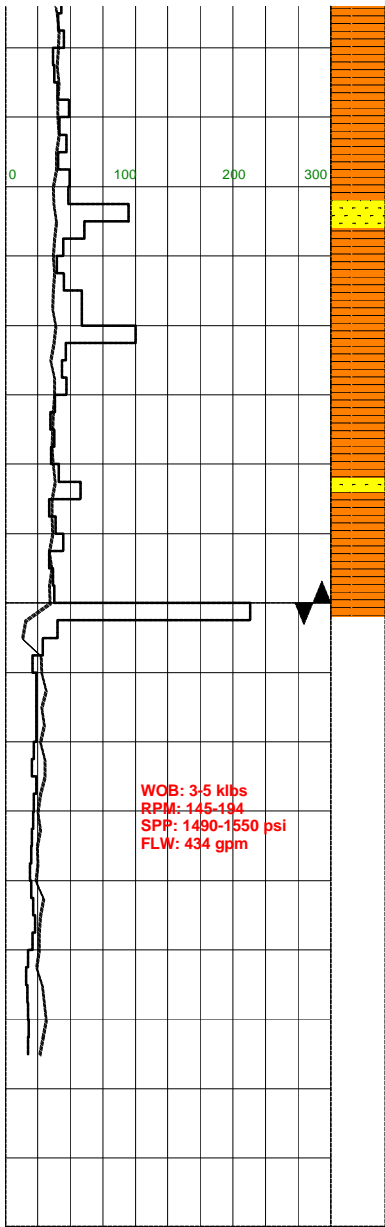
SANDSTONE:lt-med gry, med gry/brn, f-vf, wl srt, sbnd-sbang, occ v wk calc cmt, occ mod wk sil cmt, com lt gry sity & off wh arg mtx, grd to aren SLTST, com feld, com carb spks, fri-mod hd, v pr-ti vis por, no fluor.

2103-2109:COM CALCITE VEIN INFILL

NO CO2
NO H2S

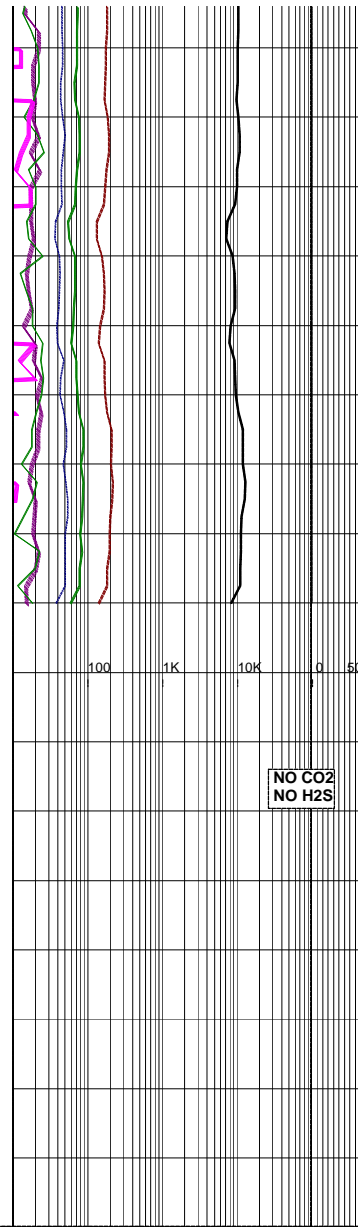
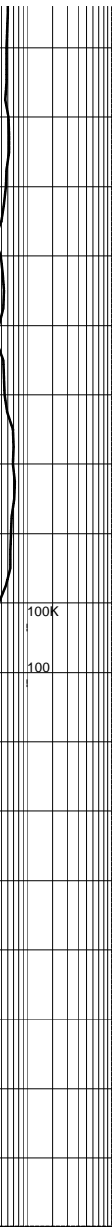
SITLY CLAYSTONE:brn/gry, med gry, aren, arg, mnr sil i/p, grd to SLTST, com feld, occ carb spks, tr dissem pyr, frm-mod hd, sbfiss-sbblky.

SANDSTONE:med gry, vf, v wl srt, sbnd, mnr wk calc cmt, mnr mod wk sil cmt, com lt gry sity mtx, grd to aren SLTST, com feld, occ carb spks, fri-mod hd, v pr-ti vis por, no fluor.



97 / 2 / 1 / Tr / Tr

97 / 2 / 1 / Tr / Tr



SILTY CLAYSTONE: med brn, med gry / brn, med gry, aren, arg i/p, grd to vf SST i/p, grd to CLYST i/p, com feld, com carb spks, micmic i/p, frm-mod hd, sbbiky-sbfiss.

SURVEY @ 2142m: 3.25° 32°T

SILTY CLAYSTONE: med brn, med gry, brn/gry, arg, occ sil i/p, com feld, occ carb spks, tr micmic, mod hd-frm, sbfiss-sbbiky.

30 STD WIPER TRIP @ 2154m TO SHOE @ 1252m

NO CO2
NO H2S

